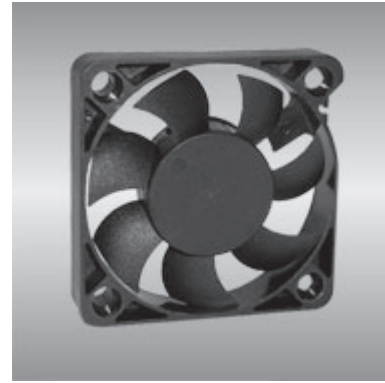


50 AG series

x50x10mm



General Specifications

- Motor : 4 Poles brushless DC motor
- Frame & Impeller : Plastic(UL 94V-0)
- Storage temperature : -40° to +75°
- Operating temperature : -10° to +70°

Major Characteristic Parameters

Model	*Bearing System	Rated Voltage	Operating Voltage Range	Rated Current	Rated Speed	Maximum Air Flow		Maximum Static Pressure		Sound Level	Weight
Part NO.	B / S / F	V	V	A	RPM	m ³ /min	CFM	mm-H ₂ O	In-H ₂ O	dBA	g
AGE05010_05J	B / S	5	4.0~6.0	0.08	3500	0.19	6.7	1.4	0.05	18.0	20
AGE05010_12J	B / S	12	6.0~13.8	0.05	3500	0.19	6.7	1.4	0.05	18.0	20
AGE05010_05L	B / S	5	4.0~6.0	0.12	4500	0.24	8.6	2.2	0.09	25.0	20
AGE05010_12L	B / S	12	6.0~13.8	0.07	4500	0.24	8.6	2.2	0.09	25.0	20
AGE05010_05M	B / S	5	4.0~6.0	0.16	5500	0.30	10.5	3.5	0.14	30.0	20
AGE05010_12M	B / S	12	6.0~13.8	0.08	5500	0.30	10.5	3.5	0.14	30.0	20
AGE05010_05H	B / S	5	4.0~6.0	0.20	6500	0.36	12.7	4.5	0.18	35.0	20
AGE05010_12H	B / S	12	6.0~13.8	0.10	6500	0.36	12.7	4.5	0.18	35.0	20

*Bearing system B: Two Ball Bearing F: Fluid Bearing S: Sleeve Bearing

